

锁紧单元(钩销缸) DPA50 - Locking device (Sub level) DPA50

主要特点:

- 铁质外壳
- 可伸缩的钩子
- 2 个安装面 (前面和后面)
- 50 扁平气缸带 3 个 G1/4"接口
- 电感式接近开关: 3 个 LED 灯, M12x1 接口
- 带滑动防焊渣保护板

Main characteristics:

- Steel flanks
- Retractable hook
- 2 mounting areas (front and rear)
- Flat pneumatic cylinder bore 50 mm with 3 feeding ports G1/4"
- Inductive proximity switch: 3 LED, connection M12x1
- Flowing weld splashes protection



[PDF](#)



[3D Step](#)



[Index](#)

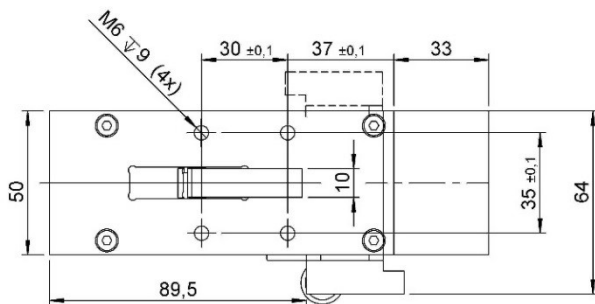
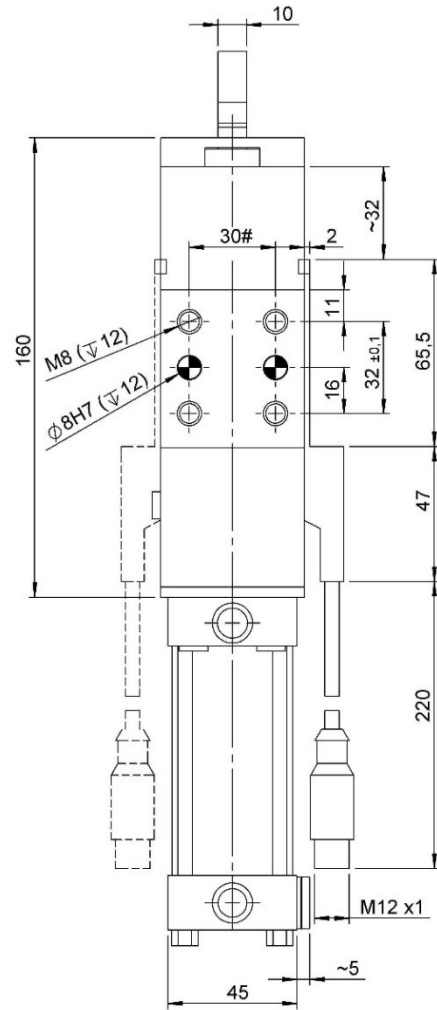
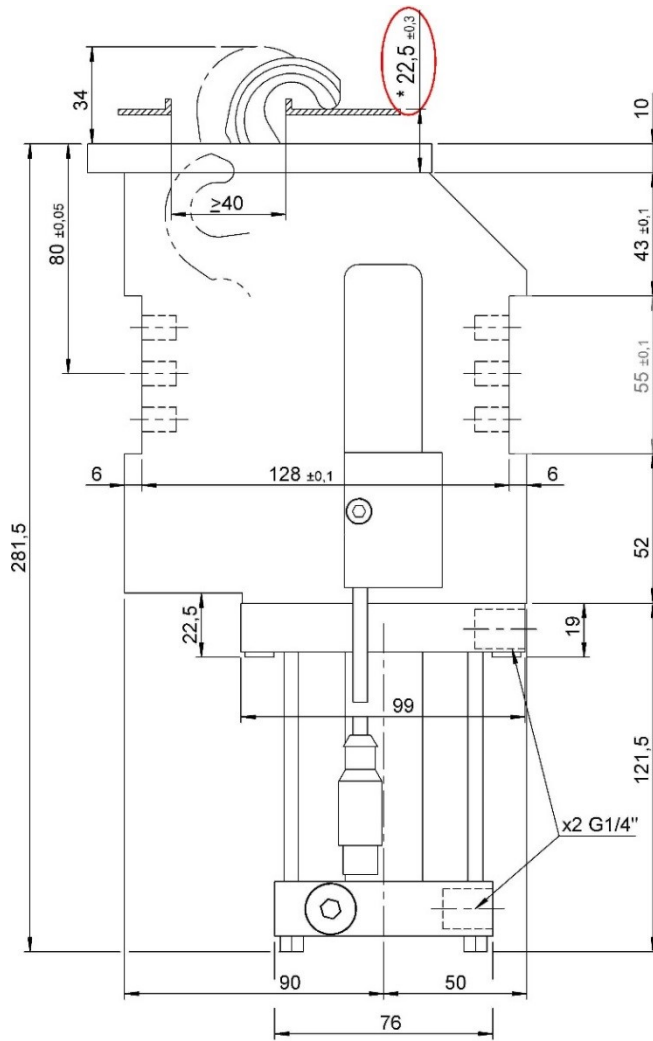
索引.

Index.

页码 Page	描述 Description	
1	主要特点 Main characteristics	
2	尺寸页码 Dimensional page	9811.2-DPA50
3	电感式接近开关 / 接气原理图表 Diagram for inductive proximity switch / Pneumatic plan	
4	备件 / Spare parts	
5	备注 / Notes	

9811.2-DPA50

钩销缸, D. 50 缸径, 可隐藏的钩子
Sub-Level, D. 50, retractable hook



*** 夹紧范围:**

如果工作范围不正确 ($\pm 0,3$)，可能会导致钩子变形

*** Clamping zone:**

A not correct working range ($\pm 0,3$), could be causing an hook deformation

纯钩钩销缸可以根据要求定制定位销

On request devices are available complete of locking pins

#公差:定位销孔 ± 0.02 , 螺纹孔 ± 0.1

#Tolerances: dowel holes ± 0.02 , screw holes ± 0.1

类型 Type	气缸缸径 Cylinder bore	最大夹紧力 (6 bar) Max. clamping force (6 bar)	重量 Weight	最大保持力 Max. Holding force	工作气压 Working pressure	空气耗气量 (6 bar) Air consumption (6 bar)
	[mm]	[daN]	[Kg]	[daN]	[bar]	[l]
9811.2-DPA50	50	400	~ 6,2	470	5 - 8	~ 0,6

电感式传感器图表 (代码. 3/062).

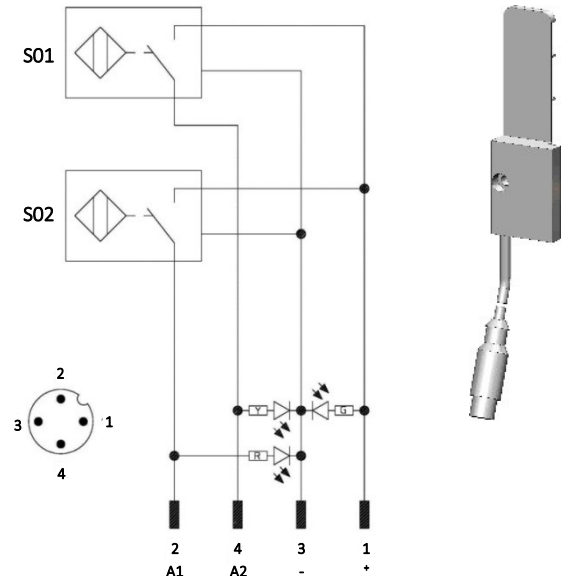
Diagram for Inductive proximity switch (cod. 3/062).

技术数据 (Turck):

- 输出类型: PNP;
- 供电电压: 10-30 VDC;
- 最大换向电流: 150 mA;
- 电源供应: < 20 mA;
- 电压差: < 1,8 V
- 温度范围: -25° / 70° C.

Technical data (Turck):

- Output type: PNP;
- Feeding voltage: 10-30 VDC;
- Max. commutating current: 150 mA;
- Power supply: < 20 mA;
- Voltage drop: < 1,8 V;
- Temperature range: -25° / 70° C.



S01 = 打开信号

S01 = opening signal

S02 = 夹紧信号

S02 = closing signal

Y = 黄色 LED / yellow LED

G = 绿色 LED / green LED

R = 红色 LED / red LED

1 = 棕色线 / brown wire

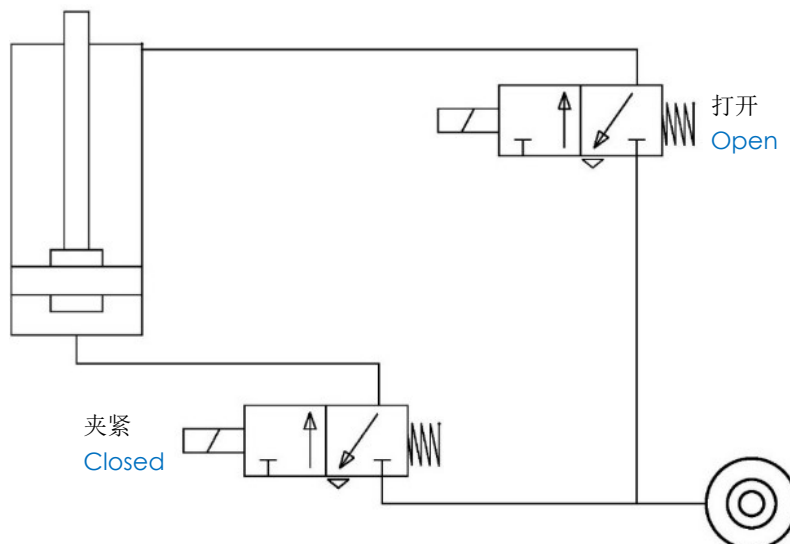
2 = 黑色线 / black wire

3 = 蓝色线 / blue wire

4 = 白色线 / white wire

气路图.

Pneumatic plant.



工作气压 Working pressure	空气耗气量 (5 bar) Air consumption (5 bar)
[bar]	[l]
5 - 8	0,6

